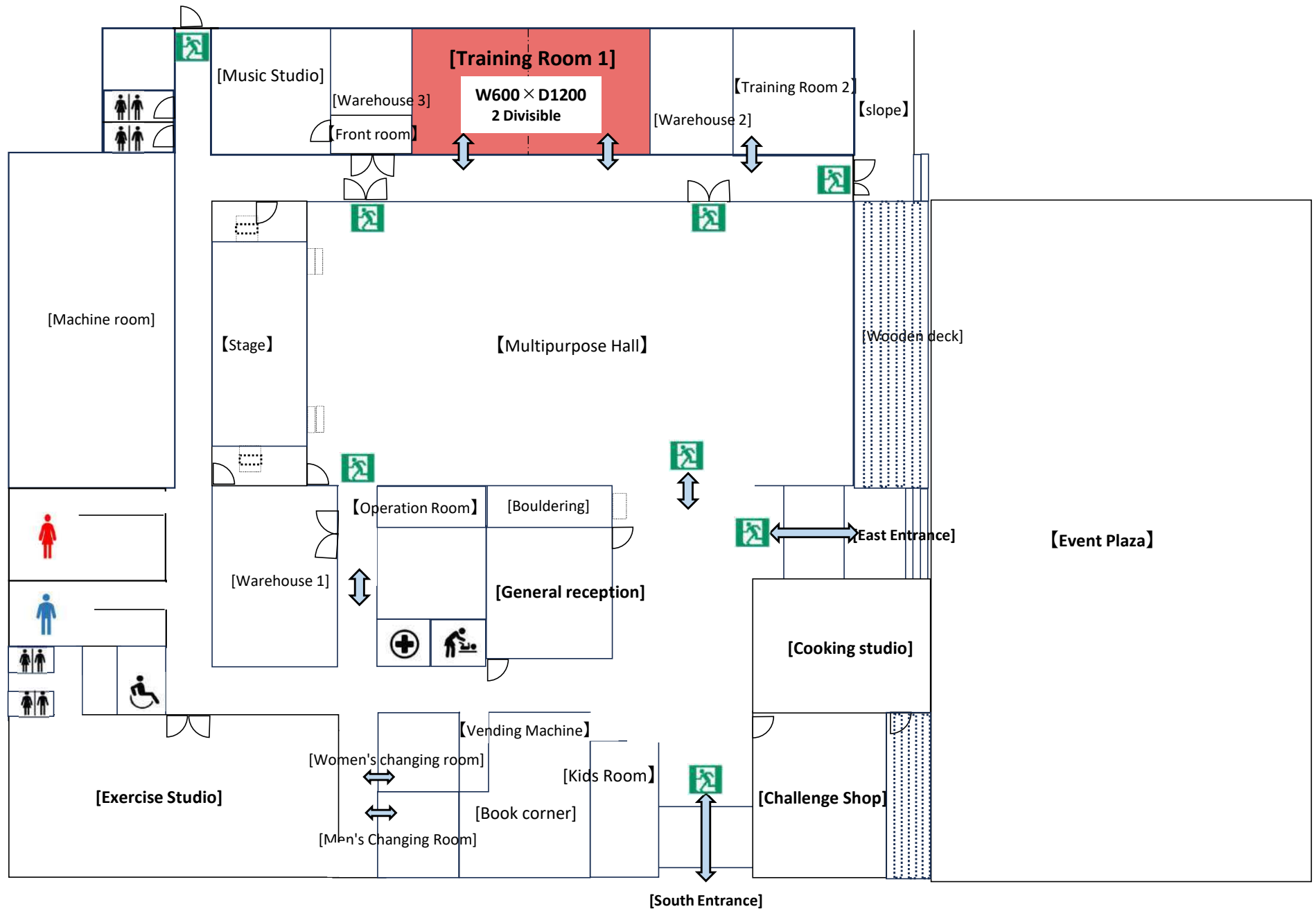
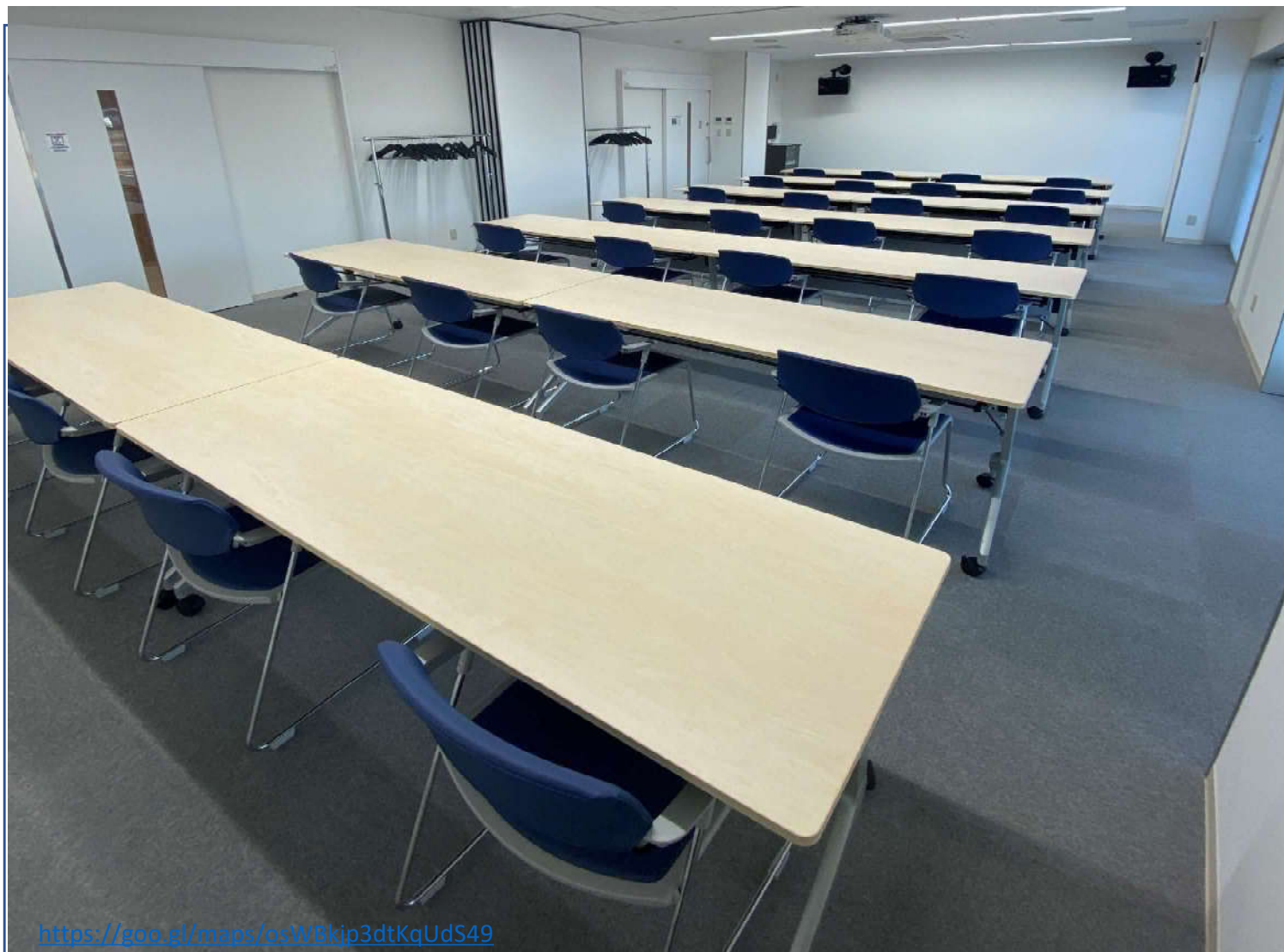


[Training Room 1]





Training Room 1

[Maximum capacity]

32 people

[Dimensions and area]

Normal

W600 × D1200

Approx. 72m²

When splitting

W600 × D600

Approx. 36m² (2 rooms)

【Remarks】

Diet is acceptable

Split and available

(Please contact us in advance)

School format is initially placed

(14 tables × 2 people)

• Chair and seat for the customer

Change the layout of the bull

It is possible to do so.

(However, the return to the status quo is loaned, Please go in time)

• Microphones, CDs, Blu-rays, Sound equipment, projections

Equipped with tartar and other equipment.

Workshops, seminars, lectures It can be used for meetings.



DLP Projector



1 unit/Panasonic
PT-VMZ60/6.000m l

Hanger Rack



2台/1 hanger rack
Hanger × 10

Sidefold table



14 tables/with
curtain board
W180×D60×H70

AV system



1unit/Regenerati
ve media (Blu-
ray/DVD/CD/SD
/USB)

Conference room chair



40 in total
28 (1 training room
has been arranged)
remnant12 feet (In
the warehouse)

Wireless Microphone



2 units/Panasonic
WX-ST200

Pin Microphone

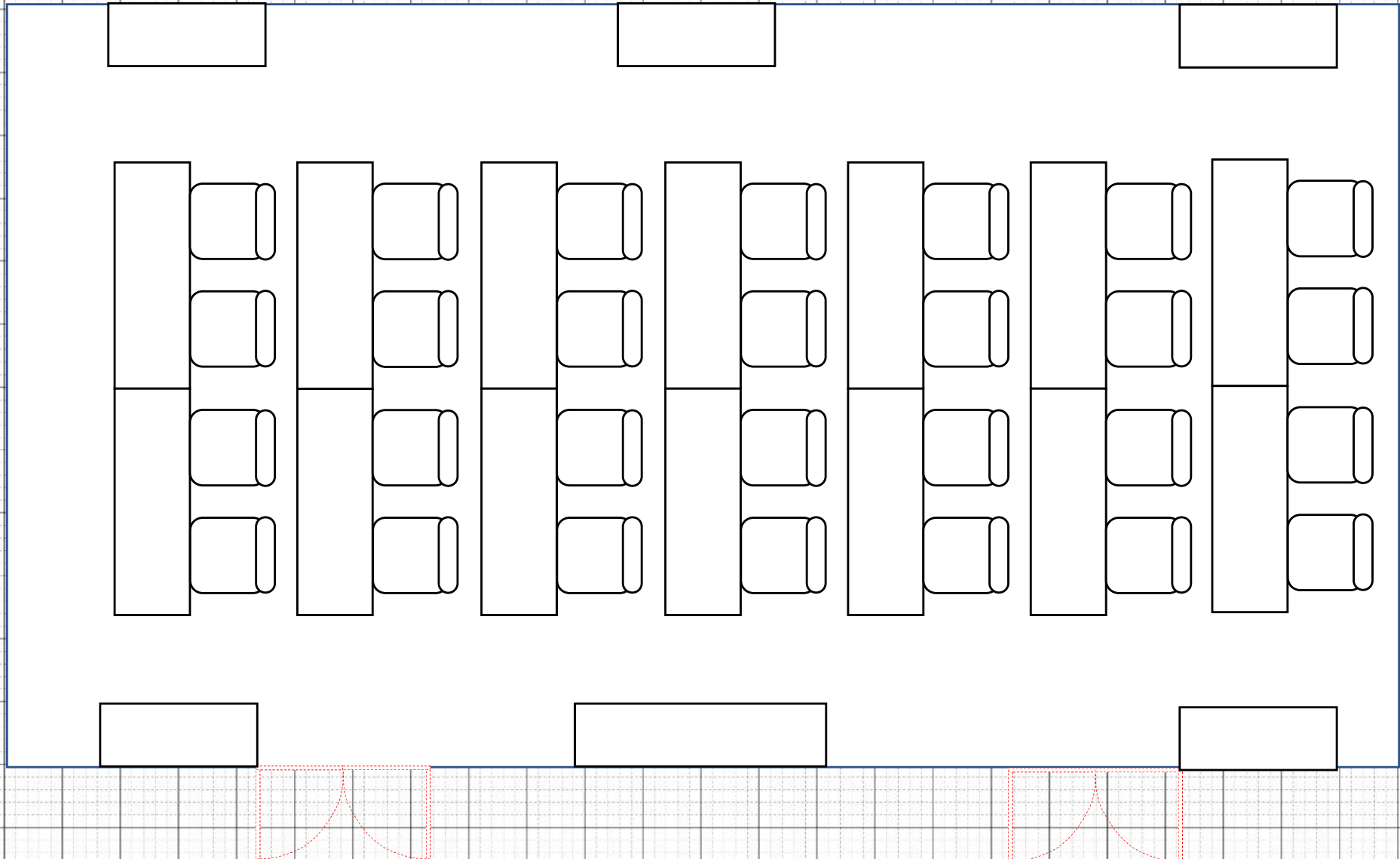


2 units/Panasonic
WX-ST400

All rooms share rental equipment	Number	Specifications and Standards
HDMI cord	3 bottles	5m × 3 bottles/15m × 1 bottle
RGB Code	2 bottles	Dsub15pin
Lan Cable	1 bottles	50m × 1 bottle
Power Extension Cord	3 bottles	3m × 1 bottle/ 5 m × 1 bottle/ 1 0 m × 1 bottle
Drum chords	1 piece	Indoor and outdoor use/length30m
HDMI→Sterminal Converter	1 bottle	5 0 (cm)
Blue Sheet	3 sheets	360 × 540 (cm) 2Sheet、 580 × 580 (cm) 1Sheet
Income Set	8 units	Microphone Wired
Laser pointer	2 units	ELP-GL09BK/Laser color green
Kurobon (Commendation basin)	2 units	W60 × D40 (cm)
Whiteboard Marker Set	2 sets	Black Pen/Red Pen/Blue Pen/Eraser
L-shaped stand	13 units	H130cm～240cm
whiteboard	4 units	wholeW180 × H190/Entry sectionW180 × H90
dresser	4 units	MirrorW45 × 155

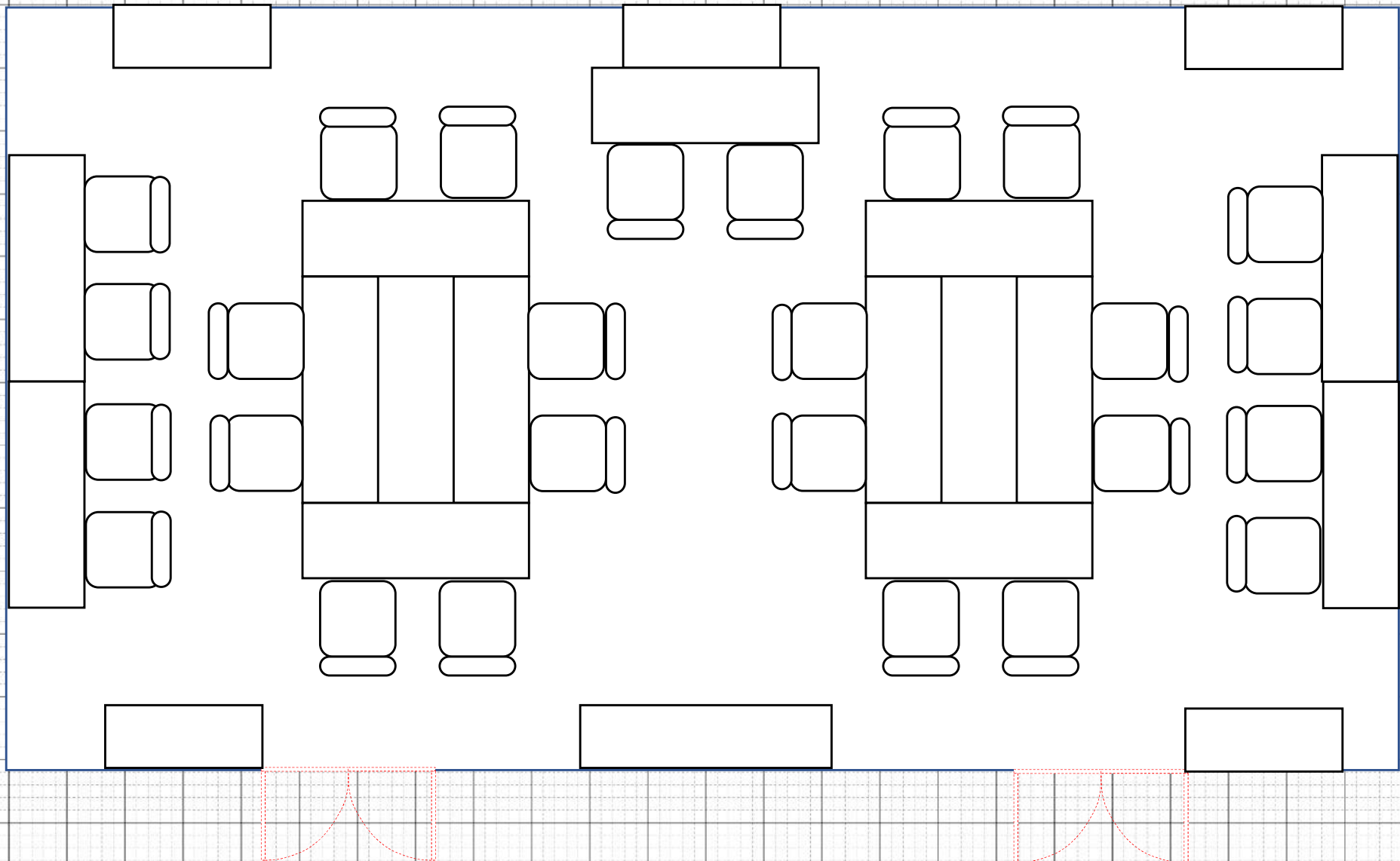
Training Room 1 Layout

• 2 seats × 4 tables × 7 rows (28 people) Initial arrangement



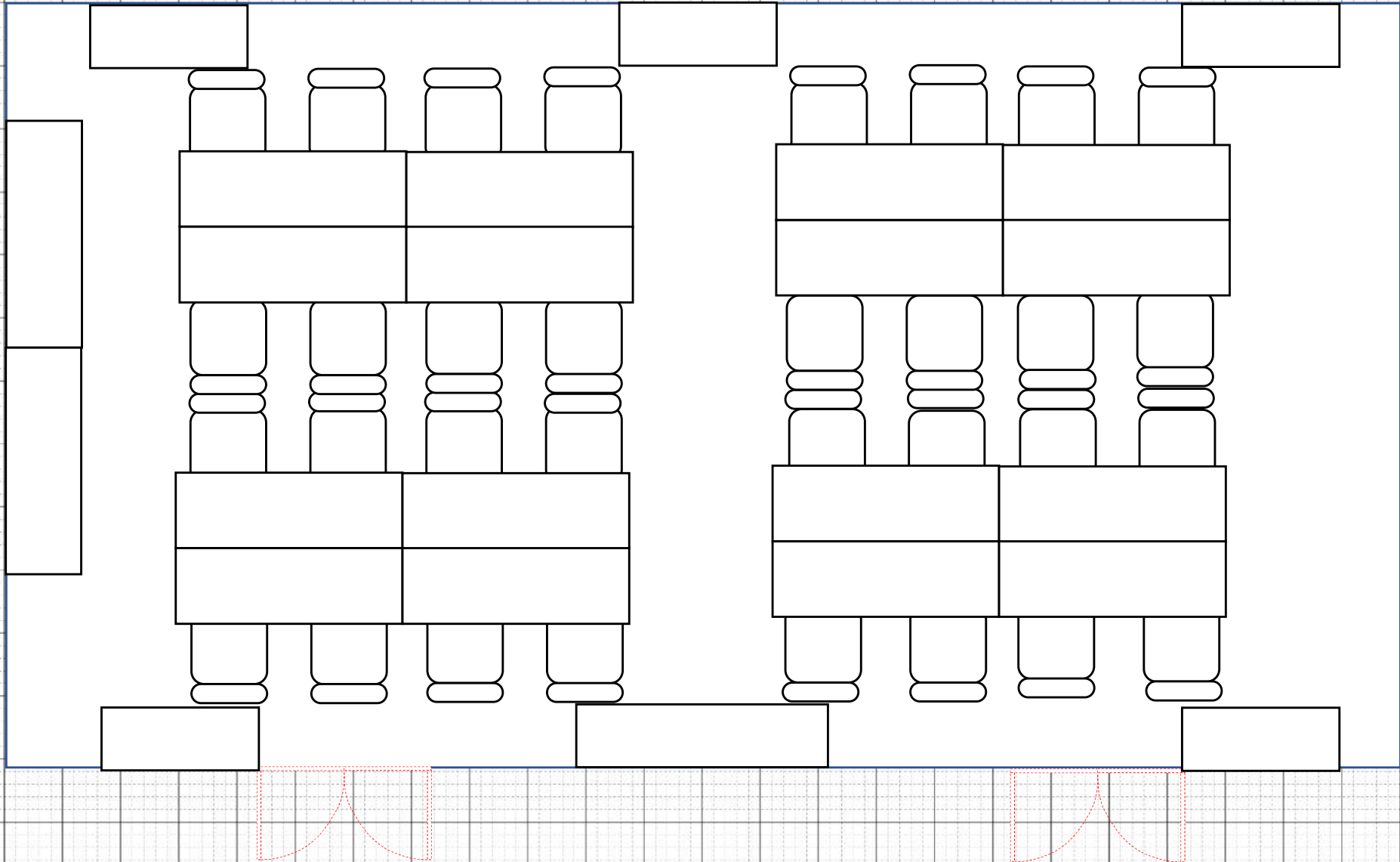
Training Room 1 Layout

- 5 tables \times 2 people = 10 people
- 8 people multiplied by the letter $\times 2$ = 16 people, a total of 26 people



Training Room 1 Layout

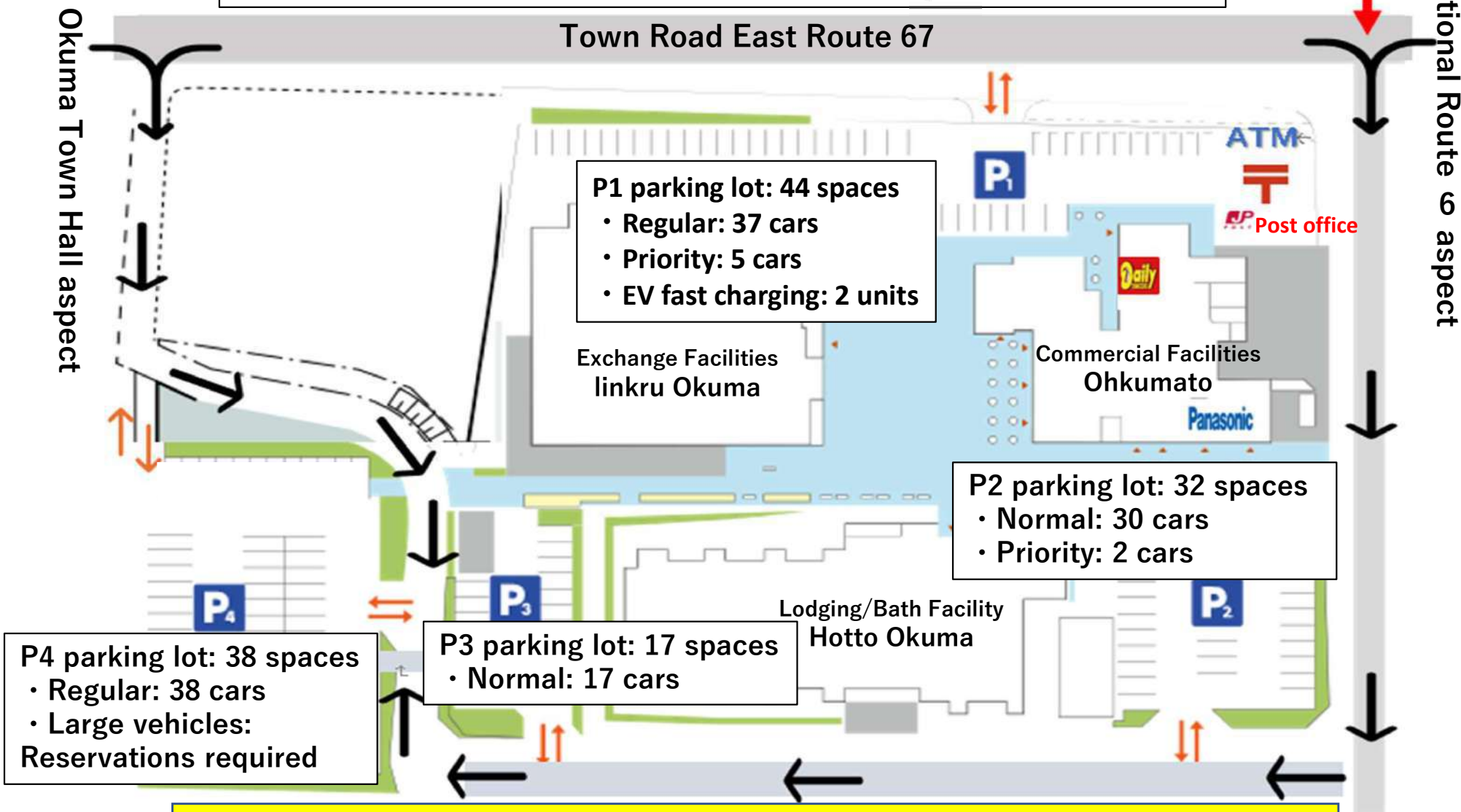
• 8 people Kakeshima × 4 = 32 people A total of 32 people



【Parking details】

Total capacity of the Okuma Town Exchange Zone parking lot: 131 spaces
Normal: 122 units, Priority: 7 units, EV fast charging: 2 units
Reservations are required for large car parking at P4 (☎0240-23-7676)

[Click here for large vehicles](#)



Notes

- Parking is limited. For customers using "linkru Okuma" and "Hotto Okuma", go to "P2", "P3", and "P4". Thank you for your cooperation in parking.
- If you are coming by large vehicle such as a chartered bus, please use "P4". Please contact us in advance. In the bus space, we will install colored cones to secure the number of cars.