



<https://goo.gl/maps/yb6bSSLDANzmGMfu7>

Training room 2

[Maximum capacity]

10

people [Dimensions/area]

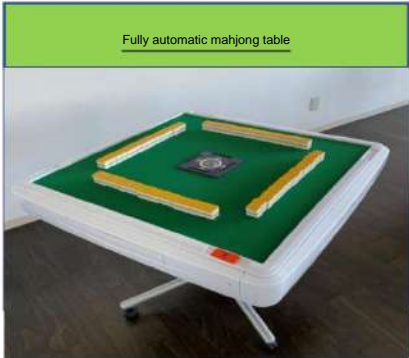
W600xD600 Approx. 36

ÿ [Note]

Eating and

drinking allowed

- This training room is suitable for round-table seminars, lectures, meetings, etc. It is fully equipped with equipment such as microphones, music CDs, Blu-rays, and projectors . We also have play equipment such as mahjong sets, shogi, and Go, so you can use it as a place to socialize with your family and



Fully automatic mahjong table

2 units/AmosJPÿ



DLP projector

1 unit/Panasonic/PT-VMZ60/6.000ml



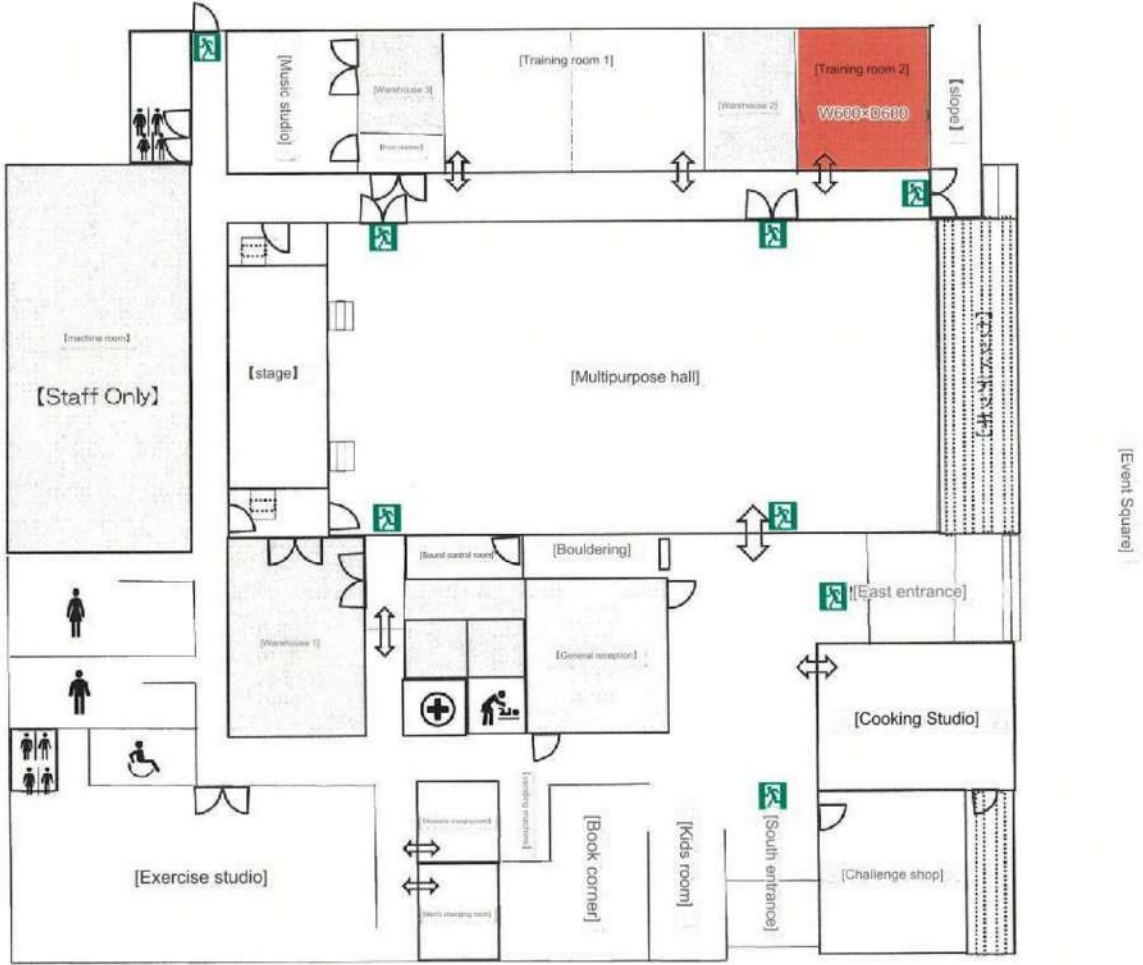
sound system

1 unit/playback medium (Blu-ray/DVD/CD/SD/USB)



Whiteboard

4 units/Whole W180xH190 Entry section W180xH90



Okuma Town Exchange Facility link Ru Okuma

1207-1 Nandaira, Okawara, Okuma-machi, Futaba-gun, Fukushima 979-1306 TEL 0240-23-7676